

GENERAL NOTES

1. PROVIDE RACEWAY AND WIRING TO ALL DEVICES, FIXTURES, AND EQUIPMENT INDICATED ON THE CONTRACT DRAWINGS. THE DRAWINGS INDICATE PARTIAL RACEWAY AND WIRING REQUIREMENTS TO HELP CLARIFY DESIGN INTENT. WHERE RACEWAY AND/OR WIRING IS NOT INDICATED FOR DEVICES, FIXTURES, OR EQUIPMENT, THE CONTRACTOR SHALL PROVIDE RACEWAY AND WIRING IN ACCORDANCE WITH THE 2008 EDITION OF THE NATIONAL ELECTRICAL CODE AND IN ACCORDANCE WITH METHODS OUTLINED IN THE CONTRACT SPECIFICATIONS AND DRAWINGS.
2. RACEWAY LOCATIONS INDICATED ON PLAN ARE APPROXIMATE. THE CONTRACTOR SHALL LOCATE/ROUTE RACEWAYS SO AS NOT TO CONFLICT WITH EXISTING BUILDING COMPONENTS, EQUIPMENT, FIXTURES, AND DEVICES.
3. ALL PENETRATIONS THROUGH FLOORS, WALLS, AND PARTITIONS SHALL BE PROVIDED AS NOTED ON DRAWING E-1. WALLS AND PARTITIONS SHALL BE PROVIDED IN ACCORDANCE WITH THE 2008 UL FIRE RESISTANCE DIRECTORY (E-9, SYSTEMS CA1235 AND WL1152). SEE PENETRATION FIRESTOP DETAILS 1 AND 2 ON DRAWING E-2.
4. RACEWAYS SHALL BE EMT WITH COMPRESSION TYPE FITTINGS UNLESS NOTED OR DETAILED OTHERWISE. SET-SCREW AND/OR INDENTOR TYPE FITTINGS SHALL NOT BE USED.
5. ONLY RACEWAYS AND WIRING THAT SPECIFICALLY SERVE DEVICES AND/OR EQUIPMENT LOCATED IN A STAIRWELL MAY BE INSTALLED IN THE STAIRWELL AS REQUIRED PER THE INTERNATIONAL BUILDING CODE.
6. INSTALL ELECTRICAL SYSTEMS WITHOUT INTERFERING WITH DUCTS, PIPES, STRUCTURAL STRUCTURAL MEMBERS, OR OTHER SYSTEMS.
7. PROVIDE ADDITIONAL SUPPORTS FOR CONTROL PANELS, RACEWAYS, AND OTHER EQUIPMENT WHEREVER THE BUILDING STRUCTURE IS NOT SUITABLE FOR DIRECT MOUNTING.
8. PROVIDE ACCESS DOORS WHERE REQUIRED TO PROVIDE ACCESS TO CONCEALED PULL AND JUNCTION BOXES.
9. INSTALL FIRE ALARM SYSTEM DEVICES AS INDICATED IN INSTALLATION DETAILS SHOWN ON DRAWING E-2, AS APPLICABLE. WHERE DEVICE INSTALLATIONS ARE NOTING MANUFACTURER'S RECOMMENDATIONS AND INDUSTRY STANDARDS IN ACCORDANCE WITH THE NATIONAL ELECTRICAL CODE.
10. EQUIPMENT AND DEVICE LOCATIONS INDICATED ON PLAN ARE APPROXIMATE. THE CONTRACTOR SHALL LOCATE/ROUTE EQUIPMENT, FIXTURES, AND DEVICES IN ACCORDANCE WITH THE 2008 UL FIRE RESISTANCE DIRECTORY (E-9, SYSTEMS CA1235 AND WL1152). SEE PENETRATION FIRESTOP DETAILS 1 AND 2 ON DRAWING E-2.
11. SEPARATELY CONNECT CONDUCTORS ASSOCIATED WITH THE FIRE ALARM SYSTEM THAT ARE NOT INTENDED TO BE USED FOR THE FIRE ALARM SYSTEM. MAKE ALL TERMINALS IN ACCORDANCE WITH THE WIRING DIAGRAMS OF THE SYSTEM. MAKE ALL CONNECTIONS WITH APPROVED CRIMP-ON TERMINAL SPACE LUGS, PRESSURE-TYPE TERMINAL BLOCKS, OR PLUG CONNECTORS. SOLDER AND/OR WIRE NUTS SHALL NOT BE USED.
12. CABLE TAPS, CABLE TAPS, WILL ONLY BE ALLOWED IN ADDRESSABLE TYPE SIGNALING LINE CIRCUITS. CABLE TAPS SHALL NOT BE PROVIDED IN HARDBARE TYPE SIGNALING DEVICE CIRCUITS AND NOTIFICATION APPLIANCE CIRCUITS. MOST NOTIFICATION APPLIANCES HAVE BOTH INCOMING AND OUTGOING CONNECTION TERMINALS - WITH PROPER PLANNING THERE SHOULD BE NO NEED TO TAP A NOTIFICATION APPLIANCE CIRCUIT. USE NUMBERED TERMINAL STRIPS IN JUNCTION, PULL OR OUTLET BOXES, AND IN ALL OTHER ELECTRICAL ENCLOSURES. SOLDER AND/OR WIRE NUTS SHALL NOT BE USED.
13. CUTTING, DRILLING, AND PATCHING: PROVIDE CHASES, SLOTS, AND OPENINGS IN EXISTING BUILDING COMPONENTS TO ALLOW FOR ELECTRICAL INSTALLATIONS. PERFORM CUTTING, DRILLING, FITTING, AND PATCHING REQUIRED TO:
 - A) INSTALL EQUIPMENT, MATERIALS, AND RACEWAYS IN EXISTING STRUCTURES.
 - B) REMOVE AND REPLACE DEFECTIVE WORK THAT DOES NOT CONFORM TO REQUIREMENTS OF THE CONTRACT DOCUMENTS.
 - C) UPON WRITTEN INSTRUCTIONS FROM THE ARCHITECT/ENGINEER, UNCOVER AND RESTORE WORK TO PROVIDE FOR ARCHITECT/ENGINEER OBSERVATION OF CONCEALED WORK.
 PROTECT EXISTING STRUCTURES, FINISHINGS, FINISHERS, MECHANICAL SYSTEMS, AND ELECTRICAL SYSTEMS WHILE PERFORMING CUTTING, DRILLING, FITTING, AND PATCHING. PATCH EXISTING SURFACES AND BUILDING COMPONENTS USING NEW MATERIALS THAT MATCH EXISTING MATERIALS. PATCHING SHALL BE PERFORMED BY EXPERIENCED INSTALLERS.
14. COORDINATE ALL REQUIRED OUTAGES TO EXISTING ELECTRICAL SERVICES AND FIRE ALARM SYSTEM WITH DENNIS GALLAGHER OF USC MAINTENANCE (PHONE NUMBER 917-6340) AND TODD GRIFFIN OF USC HEALTH & SAFETY (PHONE NUMBER 212-8775).

ELECTRICAL LEGEND

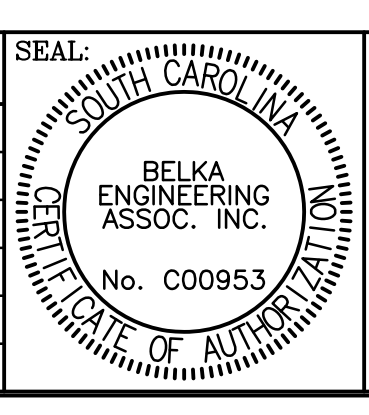
	EXISTING ELECTRICAL PANELBOARD.		
	JUNCTION BOX WITH SCREW COVER.		
	JUNCTION BOX WITH SCREW COVER, WALL MOUNTED.		
	EXISTING COMMUNICATIONS BACKBOARD.		
	PULL STATION, WALL MOUNTED. TYPICALLY MOUNT STATION IN ACCORDANCE WITH DETAIL 3 ON SHEET E-2 UNLESS A SPECIFIC INSTALLATION DETAIL IS CALLED OUT ON PLAN. STATIONS SHOWN ON PLAN TO BE CONNECTED TO EXPOSED (EXP) EMT/CONDUIT OR PRE-CAST WM TYPE RACEWAY SHALL BE MOUNTED ON A CUSTOM SURFACE BOX.		SPOT-TYPE SMOKE DETECTOR. TYPICALLY MOUNT DETECTOR IN ACCORDANCE WITH DETAIL 7 ON DRAWING E-2 UNLESS A SPECIFIC INSTALLATION DETAIL IS CALLED OUT ON PLAN. DETECTORS SHOWN ON PLAN TO BE CONNECTED TO EXPOSED (EXP) EMT/CONDUIT OR WIREMOLD #A5737 OR #A5739 BOX.
	SPOT-TYPE HEAT DETECTOR. COMBINATION 135-DEGREE FIXED TEMPERATURE AND RATE-OF-RISE CEILING MOUNTED. TYPICALLY, MOUNT DETECTOR IN ACCORDANCE WITH DETAIL 7 ON DRAWING E-2 UNLESS A SPECIFIC INSTALLATION DETAIL IS CALLED OUT ON PLAN. DETECTORS SHOWN ON PLAN TO BE CONNECTED TO EXPOSED (EXP) EMT/CONDUIT OR WIREMOLD (WM) TYPE RACEWAY SHALL BE SURFACE MOUNTED ON A WIREMOLD #A5737 OR #A5739 BOX.		DUCT-TYPE SMOKE DETECTOR. DETECTOR SHALL BE PROPERLY RATED FOR AIR FLOW IN DUCT SYSTEM. MOUNT TO DUCTWORK IN ACCORDANCE WITH DETAIL 8 ON DRAWING E-2 UNLESS A SPECIFIC INSTALLATION DETAIL IS CALLED OUT ON PLAN. SHUTDOWN CONTROL WIRING TO HVAC CONTROL SYSTEM. CONTROL CIRCUIT SHALL BE CONFIGURED SUCH THAT THE AIR HANDLING UNIT WILL AUTOMATICALLY RE-START WHEN THE FIRE ALARM PANEL IS RESET.
	FIRE ALARM SYSTEM TEST STATION. FOR DUCT-TYPE SMOKE DETECTOR, WALL MOUNT STATIONS SHALL BE SURFACE MOUNTED ON WALL AT 60" ABOVE FINISHED FLOOR. CEILING-MOUNT STATIONS SHALL BE FLUSH MOUNTED IN CENTER OF A CEILING-TILE.		ADDRESSABLE INTERFACE UNIT (AIU) - CONTROL/RELAY TYPE TO RELEASE ACCESS CONTROLLED DOORS WHEN A GENERAL ALARM OCCURS. MOUNT UNIT IN A NEMA-1 ENCLOSURE WITH SCREW COVER. PROVIDE ALL POWER/CONTROL WIRING AND ASSOCIATED RACEWAYS AND BOXES TO PROPERLY CONNECT AIU TO EXISTING DOOR LOCK WIRING. RACEWAY AND WIRING SHALL BE CONCEALED. ISOLATION RELAY TO INTERFACE ADDRESSABLE INTERFACE UNIT WITH OTHER CONTROLS. PROVIDE A NEMA 1 ENCLOSURE TO HOUSE RELAY.
	EXISTING CEILING MOUNTED SMOKE DETECTOR - REMOVE DETECTOR AND ALL ASSOCIATED BOXES, RACEWAY, AND WIRING. PROVIDE A WHITE COVER PLATE TO COVER HOLE IN CEILING.		EXISTING WALL MOUNTED PULL STATION - REMOVE STATION AND ALL ASSOCIATED BOXES, RACEWAY, AND WIRING. PROVIDE A CUSTOM SIZED STAINLESS STEEL WALLPLATE TO COVER HOLE IN WALL.
	EXISTING WALL MOUNTED AUDIBLE ALARM UNIT - REMOVE ALARM UNIT AND ALL ASSOCIATED BOXES, RACEWAY, AND WIRING. PROVIDE A CUSTOM SIZED STAINLESS STEEL WALLPLATE TO COVER HOLE IN WALL.		EXISTING CEILING AUDIO/VISUAL ALARM UNIT - REMOVE ALARM UNIT AND ALL ASSOCIATED BOXES, RACEWAY, AND WIRING. PROVIDE A WHITE COVER PLATE TO COVER HOLE IN CEILING.
	EXISTING CEILING MOUNTED VISUAL ALARM UNIT - REMOVE ALARM UNIT AND ALL ASSOCIATED BOXES, RACEWAY, AND WIRING. PROVIDE A WHITE COVER PLATE TO COVER HOLE IN CEILING.		EXISTING WALL MOUNTED VISUAL ALARM UNIT - REMOVE ALARM UNIT AND ALL ASSOCIATED BOXES, RACEWAY, AND WIRING. PROVIDE A CUSTOM SIZED STAINLESS STEEL WALLPLATE TO COVER HOLE IN WALL.
	VISIBLE-ONLY (STROBE) ALARM UNIT, WALL MOUNTED. NUMBER INDICATES MINIMUM STROBE CANDELA VALUE. TYPICALLY MOUNT ALARM UNIT IN ACCORDANCE WITH DETAIL 8 ON DRAWING E-2 UNLESS A SPECIFIC INSTALLATION DETAIL IS CALLED OUT ON PLAN. ALARM UNITS SHOWN ON PLAN TO BE CONNECTED TO EXPOSED (EXP) EMT/CONDUIT OR WIREMOLD (WM) TYPE RACEWAY SHALL BE SURFACE MOUNTED ON A CUSTOM SURFACE BOX FURNISHED BY THE ALARM UNIT MANUFACTURER.		VISIBLE-ONLY (STROBE) ALARM UNIT, CEILING MOUNTED. NUMBER INDICATES MINIMUM STROBE CANDELA VALUE. TYPICALLY MOUNT ALARM UNIT IN ACCORDANCE WITH DETAIL 8 ON DRAWING E-2 UNLESS A SPECIFIC INSTALLATION DETAIL IS CALLED OUT ON PLAN. ALARM UNITS SHOWN ON PLAN TO BE CONNECTED TO EXPOSED (EXP) EMT/CONDUIT OR WIREMOLD (WM) TYPE RACEWAY SHALL BE SURFACE MOUNTED ON A CUSTOM SURFACE BOX FURNISHED BY THE ALARM UNIT MANUFACTURER.
	COMBINATION AUDIBLE/VISIBLE (SPEAKER/STROBE) ALARM UNIT, WALL MOUNTED. NUMBER INDICATES MINIMUM STROBE CANDELA VALUE. TYPICALLY MOUNT ALARM UNIT IN ACCORDANCE WITH DETAIL 7 ON DRAWING E-2 UNLESS A SPECIFIC INSTALLATION DETAIL IS CALLED OUT ON PLAN. ALARM UNITS SHOWN ON PLAN TO BE CONNECTED TO EXPOSED (EXP) EMT/CONDUIT OR WIREMOLD (WM) TYPE RACEWAY SHALL BE SURFACE MOUNTED ON A CUSTOM SURFACE BOX FURNISHED BY THE ALARM UNIT MANUFACTURER.		COMBINATION AUDIBLE/VISIBLE (SPEAKER/STROBE) ALARM UNIT, CEILING MOUNTED. NUMBER INDICATES MINIMUM STROBE CANDELA VALUE. TYPICALLY MOUNT ALARM UNIT IN ACCORDANCE WITH DETAIL 7 ON DRAWING E-2 UNLESS A SPECIFIC INSTALLATION DETAIL IS CALLED OUT ON PLAN. ALARM UNITS SHOWN ON PLAN TO BE CONNECTED TO EXPOSED (EXP) EMT/CONDUIT OR WIREMOLD (WM) TYPE RACEWAY SHALL BE SURFACE MOUNTED ON A CUSTOM SURFACE BOX FURNISHED BY THE ALARM UNIT MANUFACTURER.
	CONVENTION AUDIBLE/VISIBLE (SPEAKER/STROBE) ALARM UNIT, WIREMOLD TYPE, WALL MOUNTED. NUMBER INDICATES MINIMUM STROBE CANDELA VALUE. PAINT ALARM DEVICE AND BOX CAST METAL WEATHERPROOF BO. PAINT FINISH (OO NOT PAINT MATCH METAL WEATHERPROOF BO. PAINT FINISH (OO NOT PAINT STROBE LENS). ORIENT WEEP-HOLES OF CAST BOX DOWN (BOTTOM SIDE OF BOX).		EMT RACEWAY - CONCEALED UNLESS NOTED OTHERWISE. EXPOSED EMT RACEWAY.
	SURFACE METAL RACEWAY (WIREMOLD OR EQUAL).		EMT RACEWAY - CONCEALED UNLESS NOTED OTHERWISE.

ELECTRICAL ABBREVIATIONS

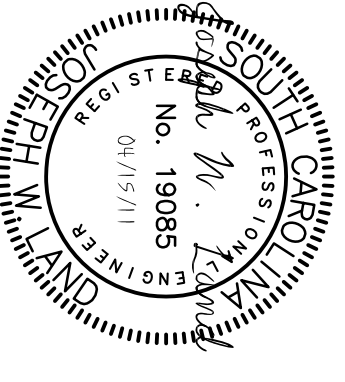
AFB	ABOVE FINISHED FLOOR
BFG	BELOW FINISHED GRADE
EXP	EXPOSED (EMT)
FACP	FIRE ALARM CONTROL PANEL
J-BOX	JUNCTION BOX
NEC	NATIONAL ELECTRICAL CODE
WM	WIREMOLD SURFACE METAL RACEWAY
WM	WEATHERPROOF

ELECTRICAL DRAWING INDEX

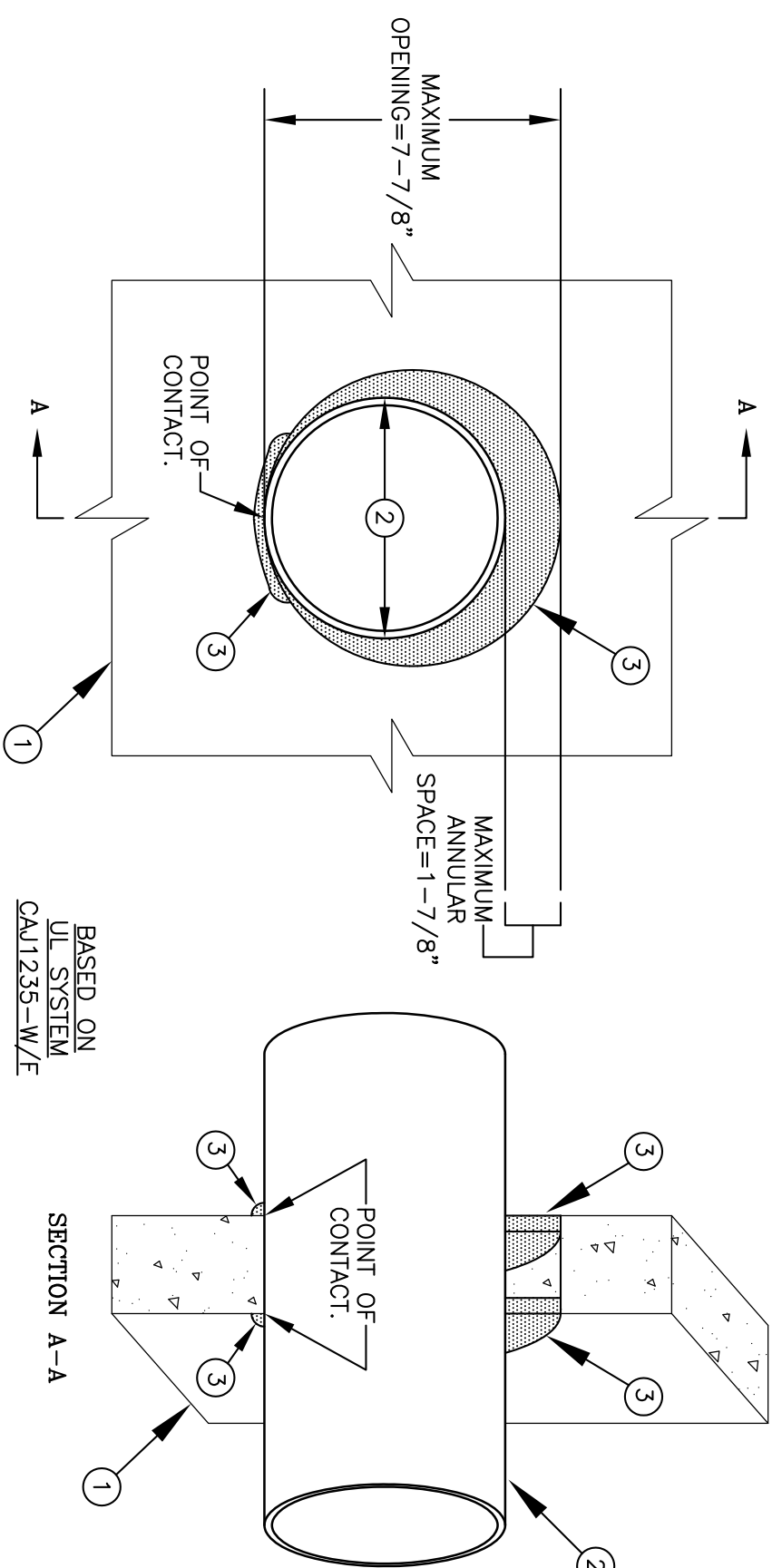
E-1	GENERAL NOTES AND ELECTRICAL LEGEND
E-2	FIRE ALARM INSTALLATION DETAILS
E-3	FIRST FLOOR FIRE ALARM DEMOLITION PLAN
E-4	FIRST FLOOR FIRE ALARM DEMOLITION PLAN
E-5	BASINMENT LEVEL FIRE ALARM PLAN
E-6	FIRST FLOOR FIRE ALARM PLAN
E-7	MECHANICAL ROOM FIRE ALARM PLAN AND SINGLE-LINE



BUILDING: 145	DRAWING: DESCRIPTION	DATE: 15APR11	DRAWN BY: JWL	CHECKED BY: JWL	SEAL:
REV.			DATE	ORIG. BY	DRAWN BY
			07SEP05		
			21AUG06		
			26MAR08		
			30SEP08		
			03FEB10		

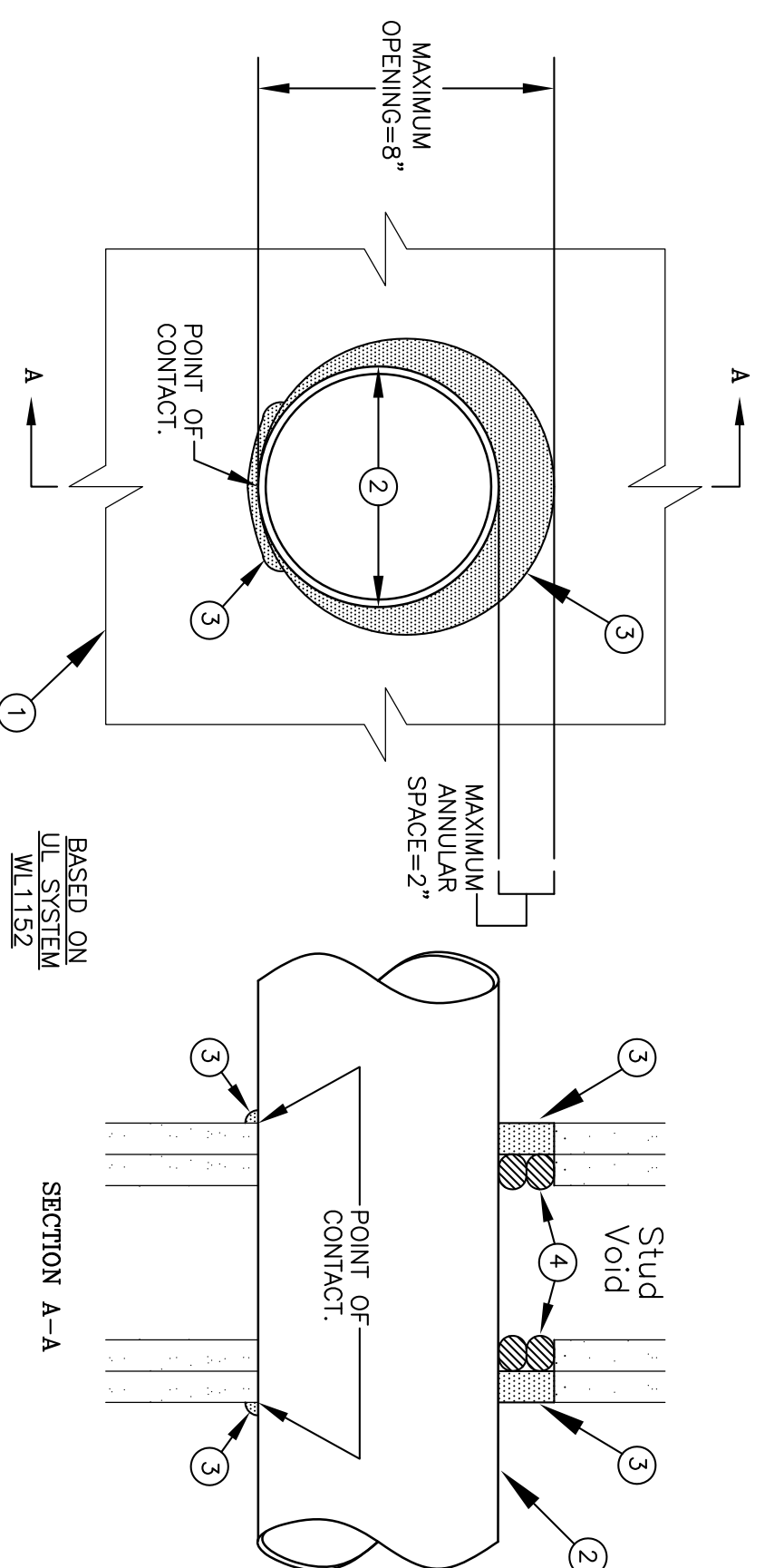


- DETAIL LEGEND**
- FLOOR, WALL OR CEILING ASSEMBLY, MINIMUM 4-1/2" CONCRETE OR BLOCK.
 - PENETRATING ITEM, MAXIMUM 6" STEEL CONDUIT OR MAXIMUM 4" EMT.
 - FIRESTOPPING: GRADE CONSTRUCTION PRODUCTS FLAMESAFE FS-1900 SEALANT APPLIED TO 1/2" DEPTH. ADD A 3/8" BEAD AT POINT OF CONTACT.

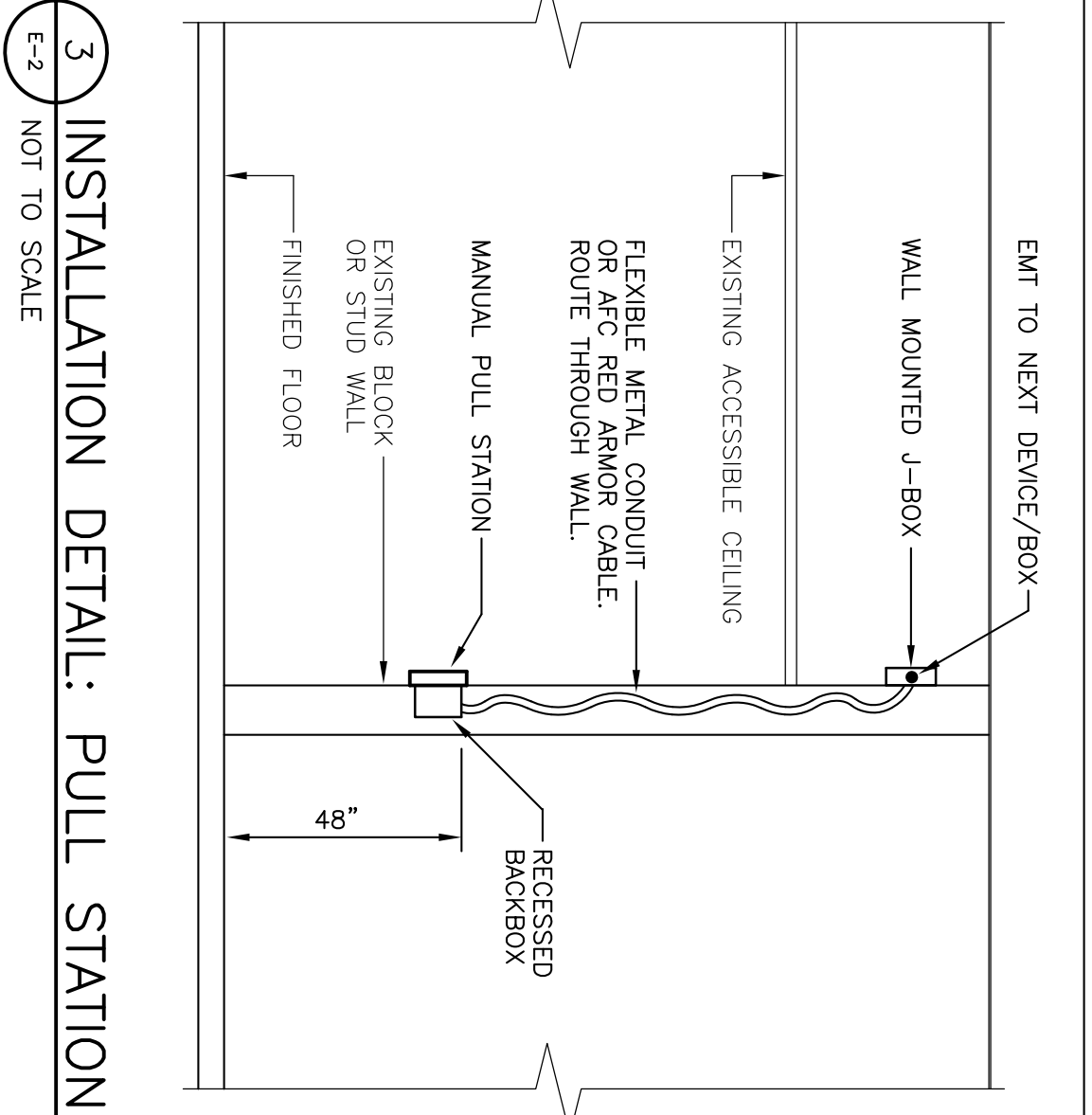


1 RACEWAY THROUGH CONCRETE OR BLOCK FLOOR/WALL/CEILING PENETRATION FIRESTOP DETAIL
NOT TO SCALE

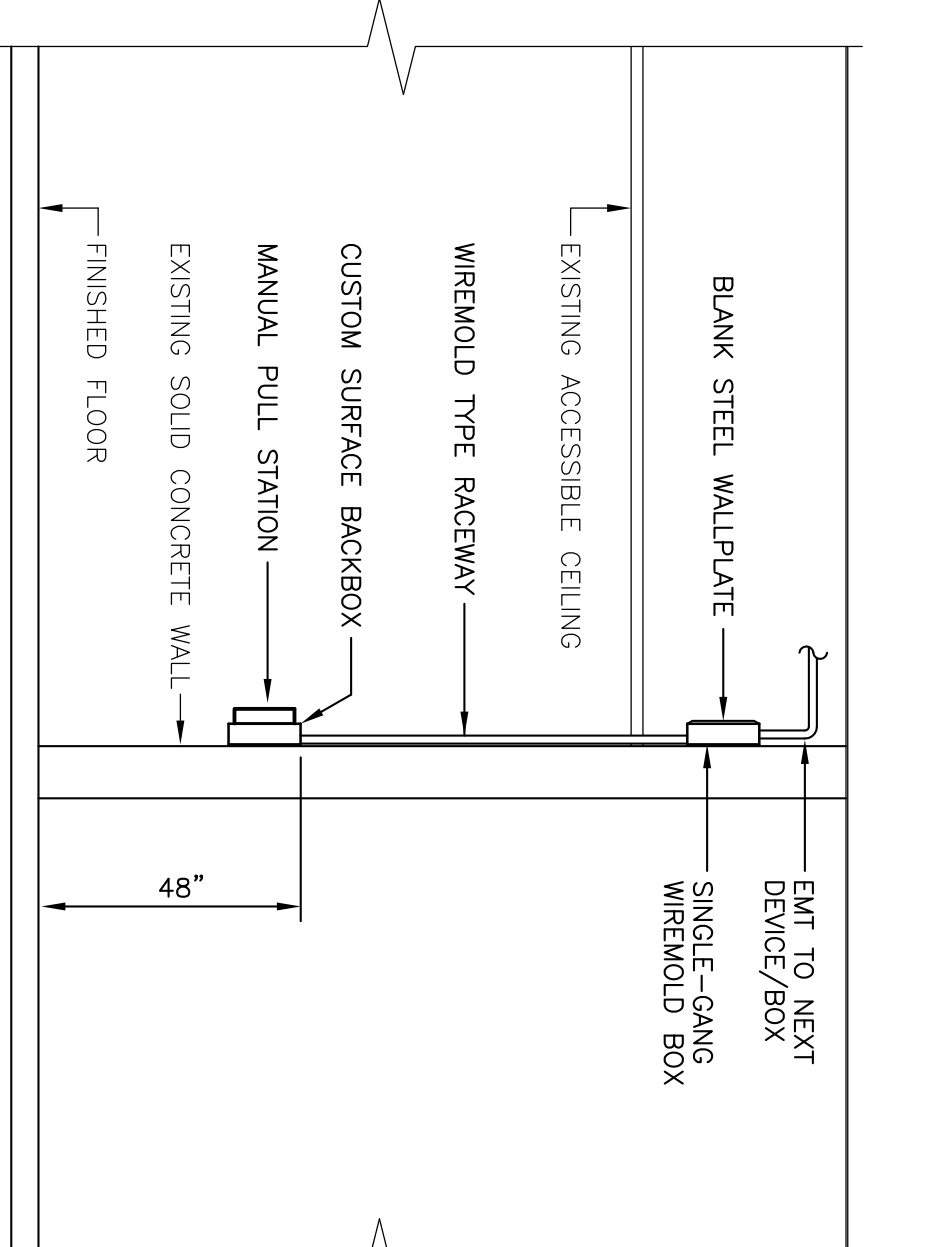
- DETAIL LEGEND**
- WALL ASSEMBLY, WOOD OR STEEL STUDS COVERED WITH GYPSUM WALLBOARD.
 - PENETRATING ITEM, MAXIMUM 6" STEEL CONDUIT OR MAXIMUM 4" EMT.
 - FIRESTOPPING: GRADE CONSTRUCTION PRODUCTS FLAMESAFE FS-1900 SEALANT APPLIED TO 1/2" DEPTH. ADD A 3/8" BEAD AT POINT OF CONTACT.
 - BACKER RODS: POLYURETHANE OR POLYURETHANE BACKER RODS COMPRESSED INTO ANNULUS TO BE USED AS DAMMING.



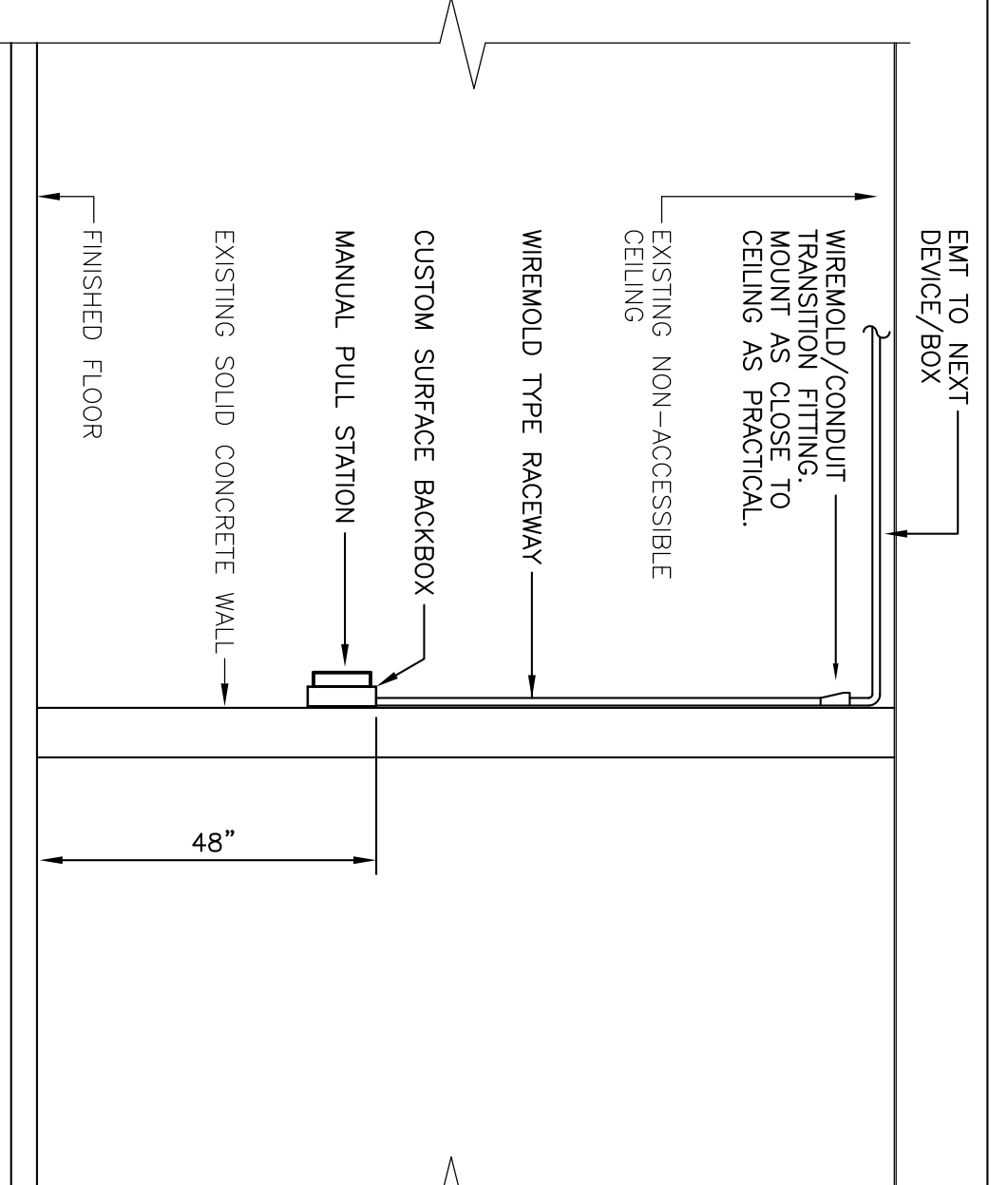
2 RACEWAY THROUGH STUD WALL PENETRATION FIRESTOP DETAIL
NOT TO SCALE



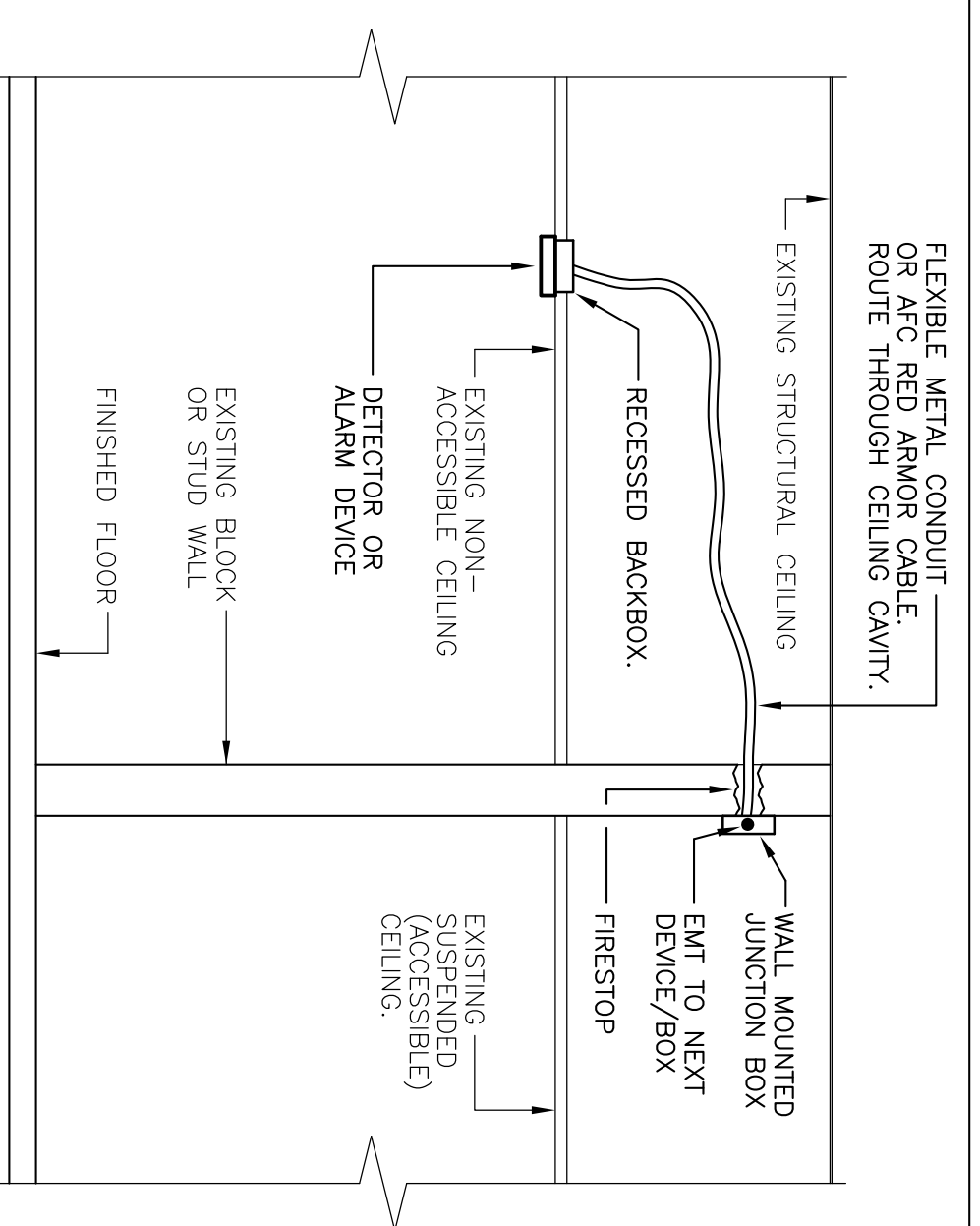
3 INSTALLATION DETAIL: PULL STATION
NOT TO SCALE



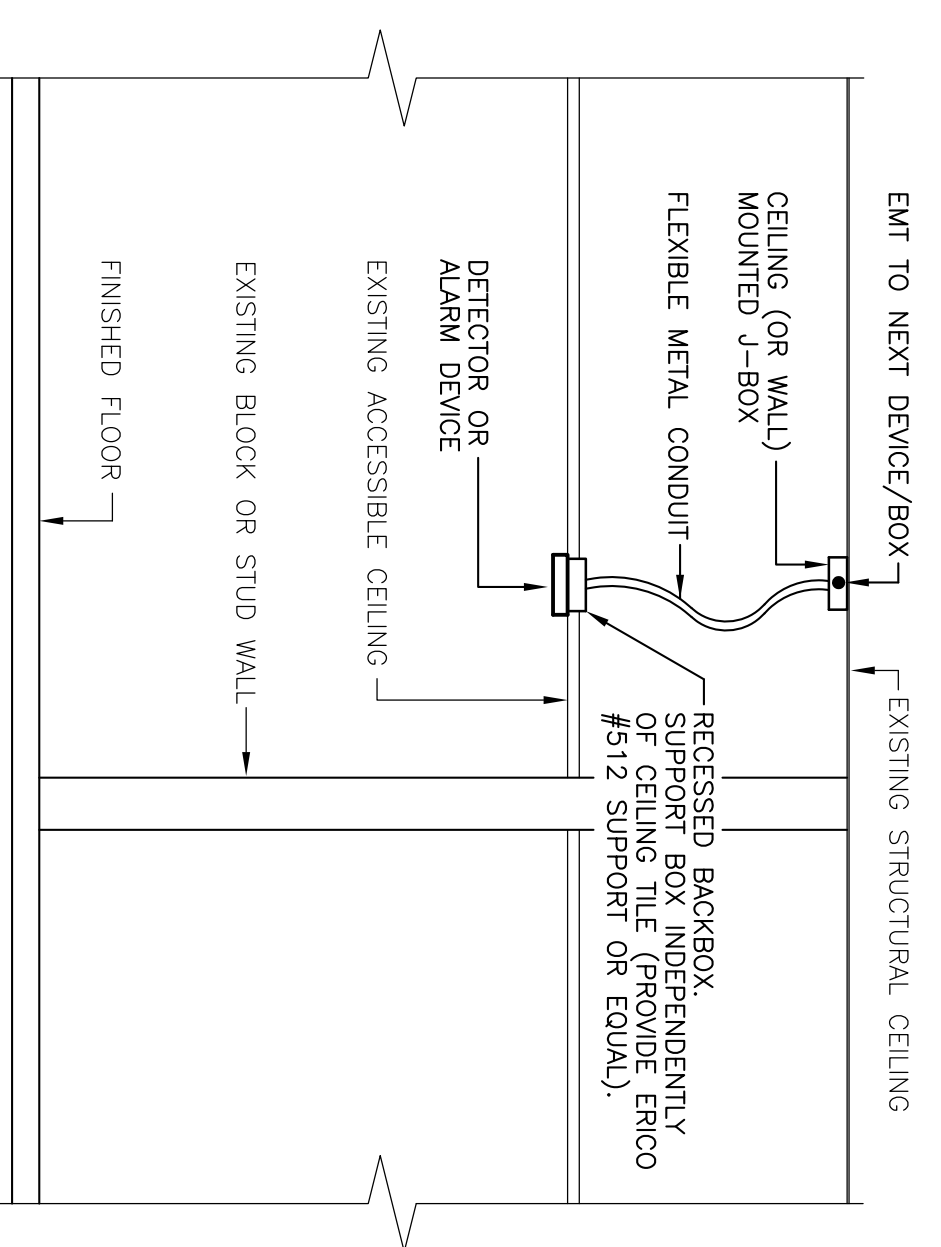
4 INSTALLATION DETAIL: PULL STATION
NOT TO SCALE



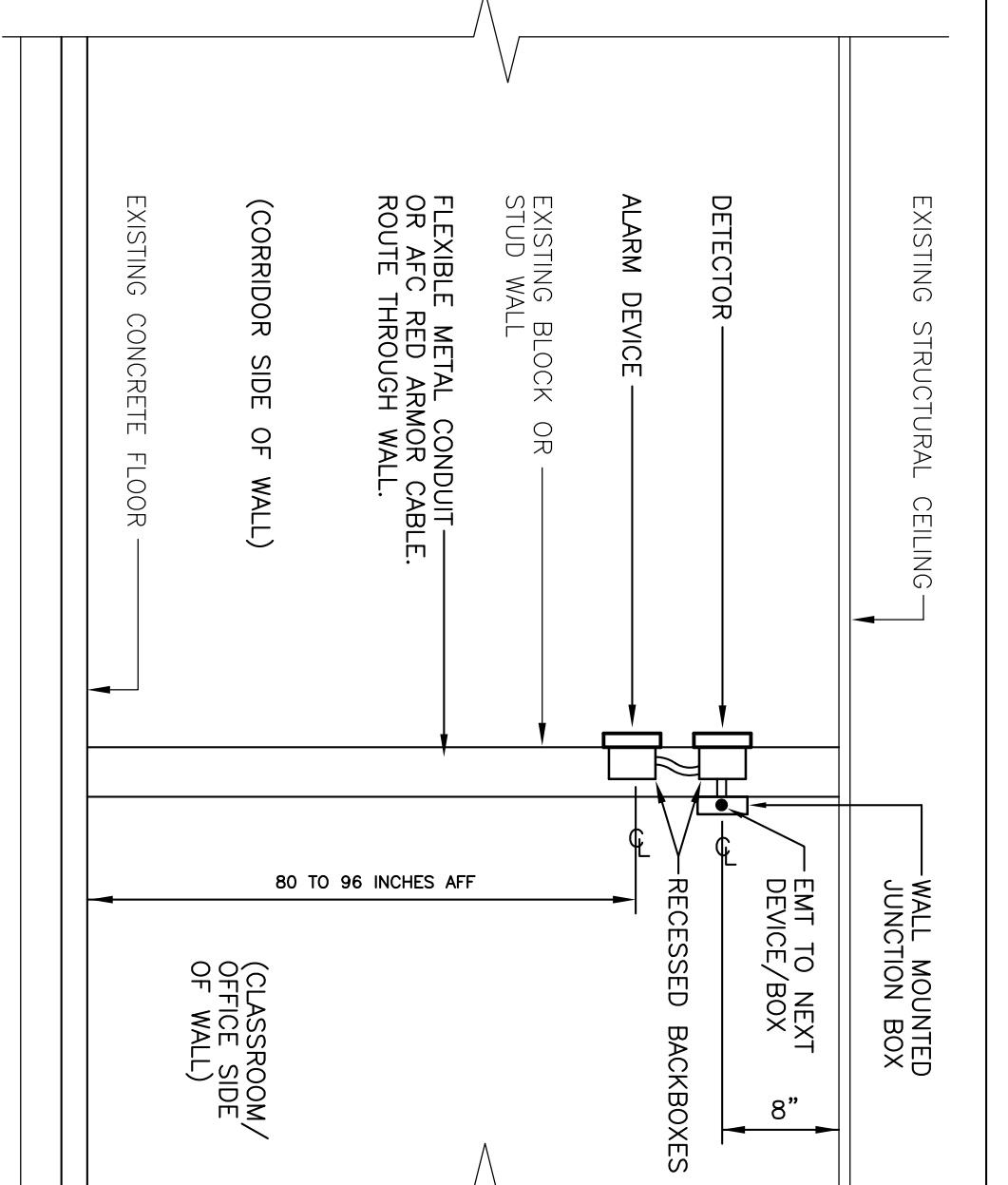
5 INSTALLATION DETAIL: PULL STATION
NOT TO SCALE



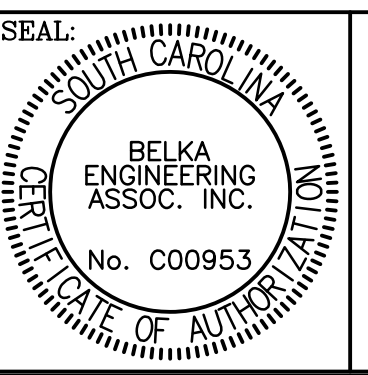
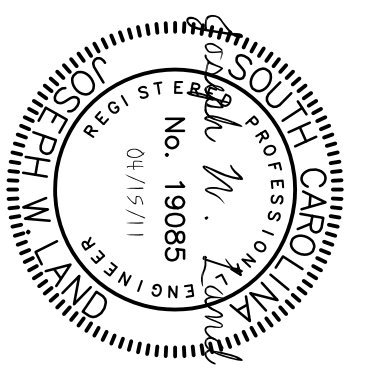
6 TYPICAL INSTALLATION DETAIL: CEILING DETECTORS & ALARM DEVICES
NOT TO SCALE



7 TYPICAL INSTALLATION DETAIL: CEILING DETECTORS & ALARM DEVICES
NOT TO SCALE



8 TYPICAL INSTALLATION DETAIL: DETECTOR & ALARM DEVICE
NOT TO SCALE



CAMPUS PLANNING AND CONSTRUCTION
COLUMBIA, SC 29208

BUILDING: 145	DRAWING: DESCRIPTION	DATE: 15APR11	DRAWN BY: JWJ	CHECKED BY: JWJ	SEAL: BELKA ENGINEERING ASSOC. INC. No. C00953
REV.			DATE	ORIG. BY	DRAWN BY
			07SEP05		
			21AUG06		
			26MAR08		
			30SEP08		
			03FEB10		

PROJECT TITLE: FIRE ALARM UPGRADES
COMPUTER CENTER ANNEX BUILDING

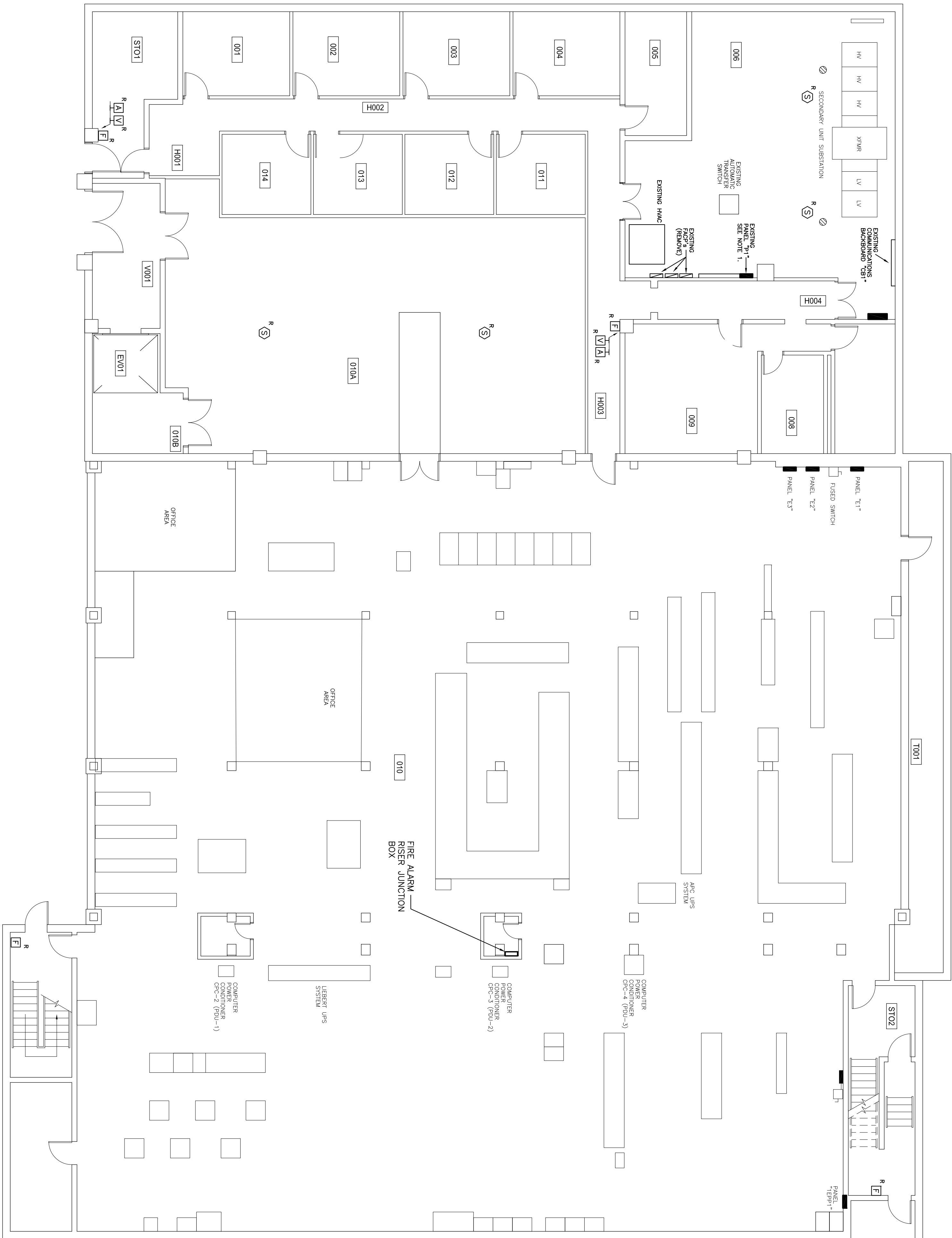


University of South Carolina

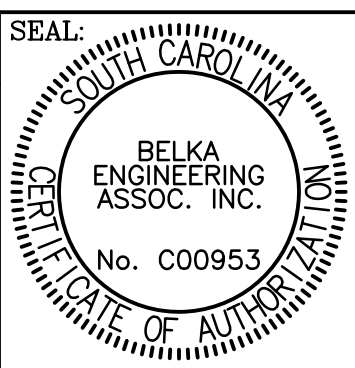
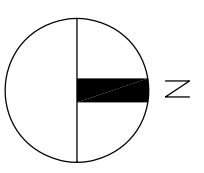
SHEET: E-2
2 OF 7
SHEET IN SET: 2 OF 7

NOTES

1. EXISTING FIRE ALARM PANELS ARE SERVED FROM EXISTING CIRCUITS 25 AND 27 IN EXISTING PANEL "F1".




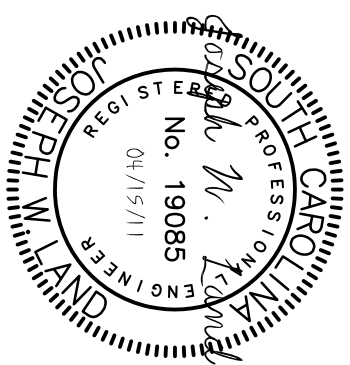
1 BASEMENT LEVEL FIRE ALARM DEMOLITION PLAN - BLDG 145
E-3 SCALE: 1/8" = 1'-0"



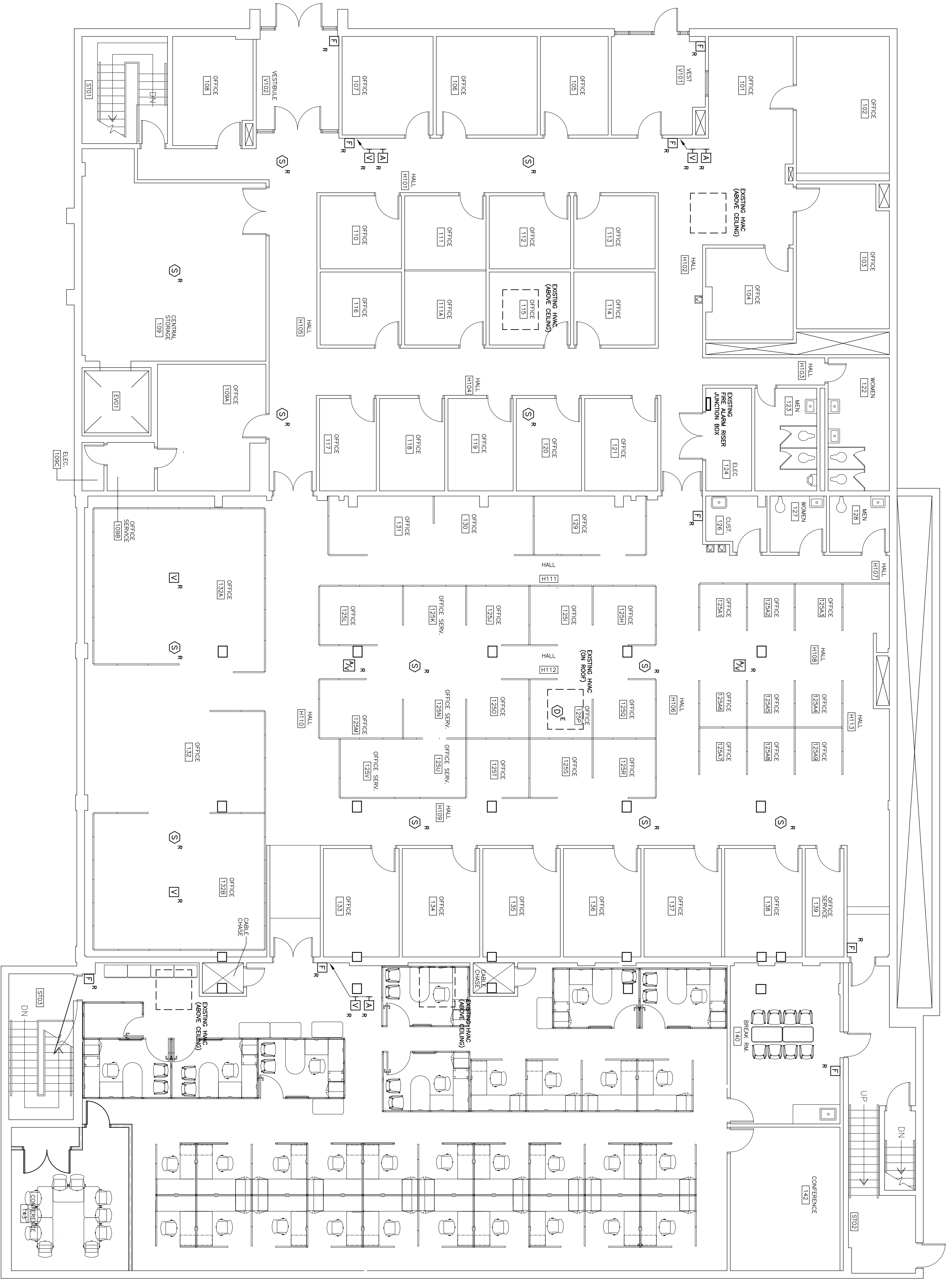
CAMPUS PLANNING AND CONSTRUCTION
 COLUMBIA, SC 29208

BUILDING:	DRAWING:	DATE:	DRAWN BY:	CHECKED BY:
145		15APR11	JWL	JWL
REV.	DESCRIPTION	DATE	ORIG. BY	DRAWN BY
		07SEP05		
		21AUG06		
		26MAR08		
		30SEP08		
		03FEB10		

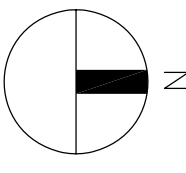
PROJECT TITLE: FIRE ALARM UPGRADES
 COMPUTER CENTER ANNEX BUILDING
 University of South Carolina



SHEET: **E-3**
 3 OF 7
 SHEET IN SET:
 3 OF 7



1
E-4
SCALE: 1/8" = 1'-0"

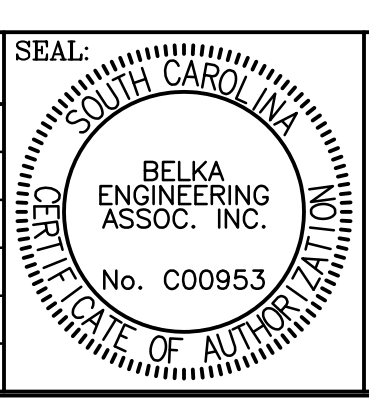


PROJECT TITLE: FIRE ALARM UPGRADES
COMPUTER CENTER ANNEX BUILDING



University of South Carolina

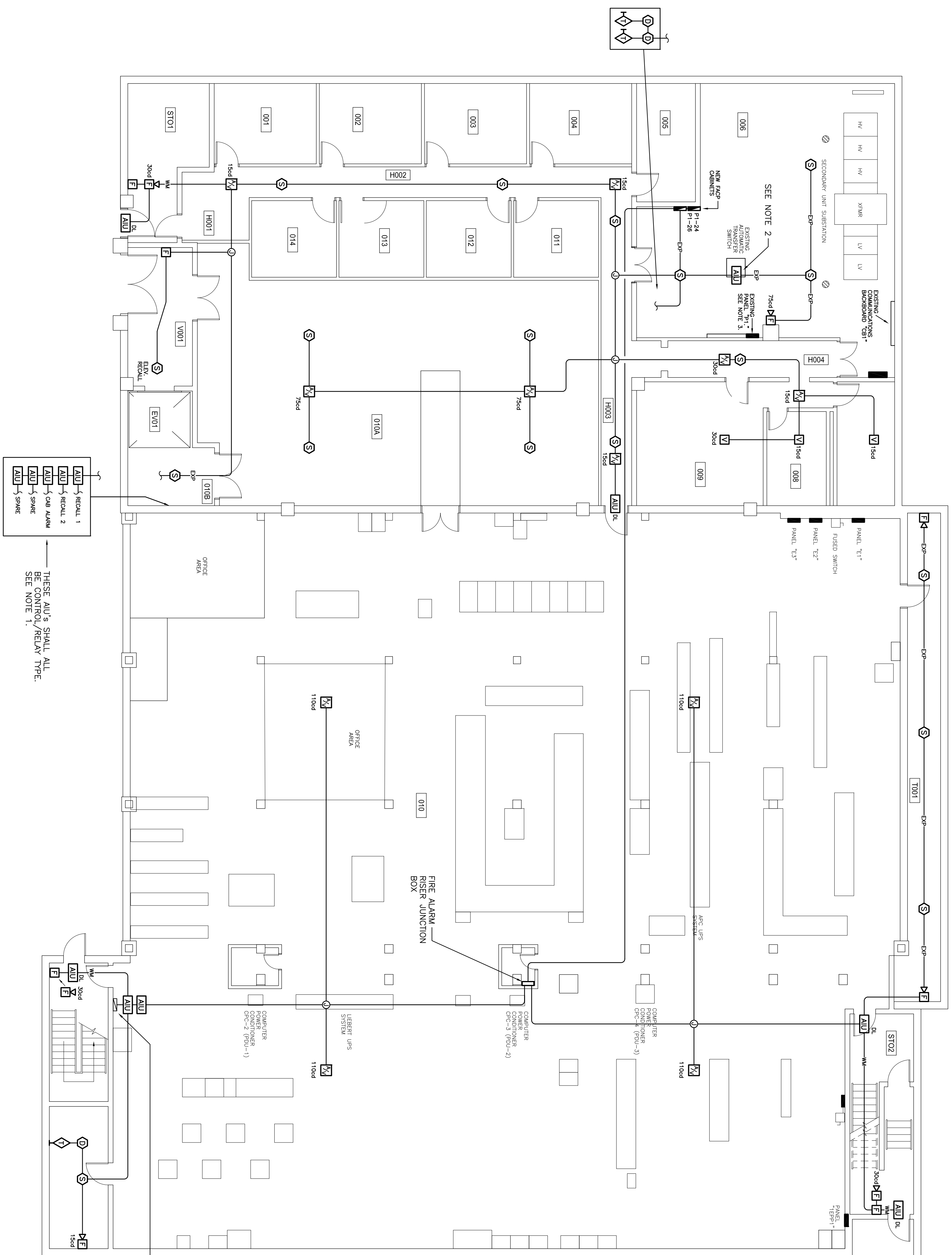
BUILDING:	DRAWING:	DATE:	DRAWN BY:	CHECKED BY:
145	DESCRIPTION	15APR11	JWL	JWL
REV.			DATE	ORIG. BY
			07SEP05	
			21AUG06	
			26MAR08	
			30SEP08	
			03FEB10	



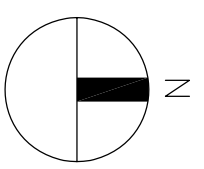
CAMPUS PLANNING
AND CONSTRUCTION
COLUMBIA, SC 29208

SHEET: E-4
4 OF 7
SHEET IN SET: 4 OF 7





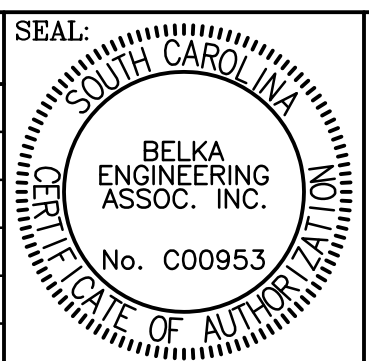
1
E-5
SCALE: 1/8" = 1'-0"
BASEMENT LEVEL FIRE ALARM PLAN - BLDG 145



THESE AUU'S SHALL ALL BE CONTROL/RELAY TYPE. SEE NOTE 1.

FIRE SUPPRESSION PANEL (FURNISHED UNDER A SEPARATE CONTRACT). PROVIDE AUU'S AND ASSOCIATED WIRING AS REQUIRED TO MONITOR CONTACTS OF THE FIRE SUPPRESSION PANEL.

- NOTES
1. PROVIDE CONNECTIONS TO EXISTING ELEVATOR CONTROLLER FOR PRIMARY AND SECONDARY RECALL AND FOR ALARM BELL IN ELEVATOR CAR.
 2. PROVIDE CONNECTION TO EXISTING GENERATOR TRANSFER SWITCH TO MONITOR COMMON TROUBLE CONTACT.
 3. PANT HANDLES OF CIRCUIT BREAKERS 24 AND 26 IN PANEL "24" RED. PROVIDE THREE #12 AWG CONDUCTORS WITH #12 AWG GROUND WIRE IN 1/2" EMT FROM PANEL "21" TO FIRE ALARM PANELS.

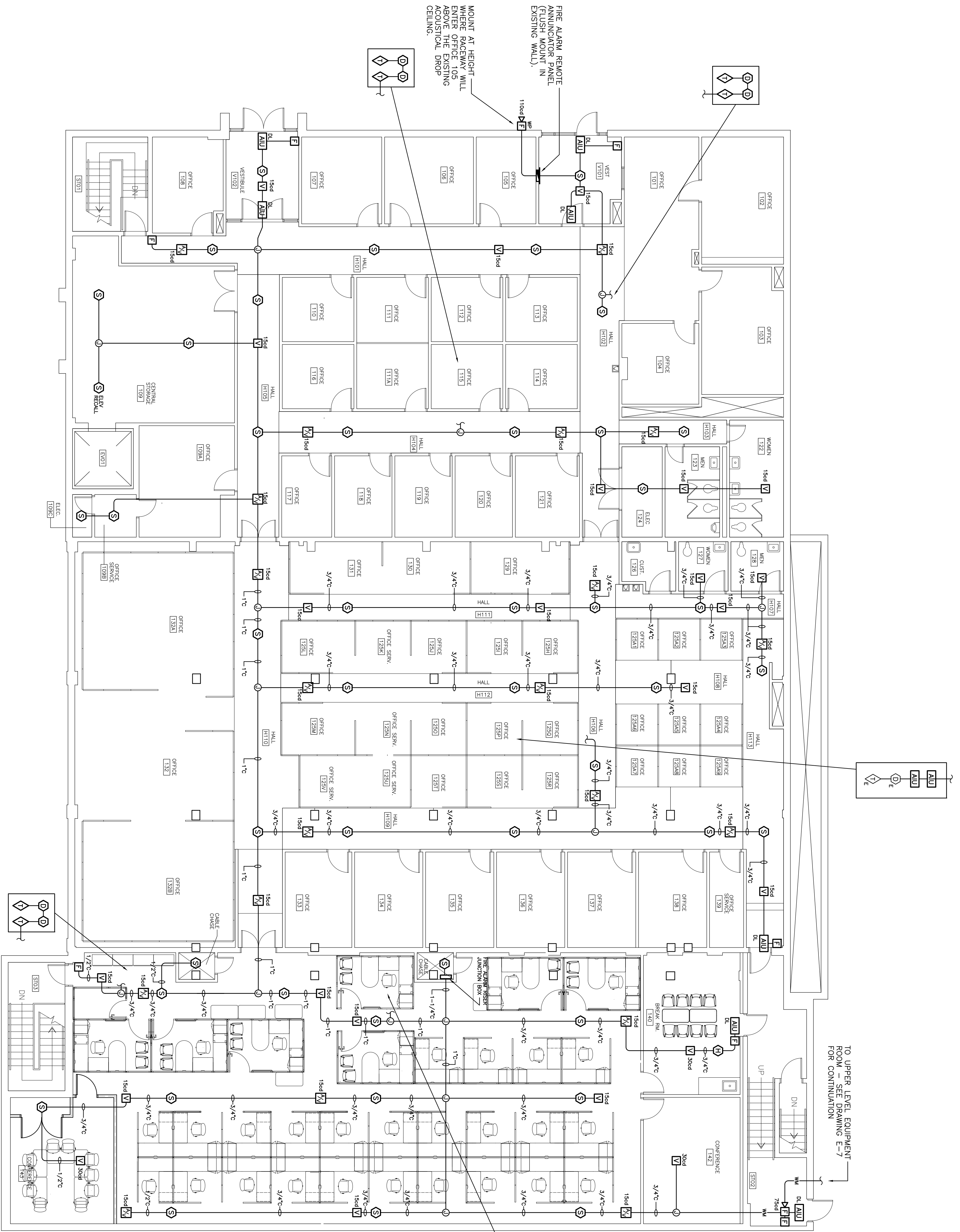


CAMPUS PLANNING AND CONSTRUCTION
COLUMBIA, SC 29208

REV.	DESCRIPTION	DATE	ORIG. BY	DRAWN BY	CHECKED BY
07SEP05				JWL	JWL
21AUG06				JWL	JWL
26MAR08				JWL	JWL
30SEP08				JWL	JWL
03FEB10				JWL	JWL

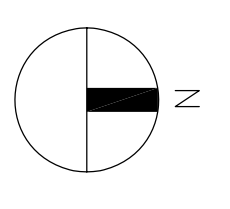
PROJECT TITLE: FIRE ALARM UPGRADES
COMPUTER CENTER ANNEX BUILDING

UNIVERSITY OF SOUTH CAROLINA



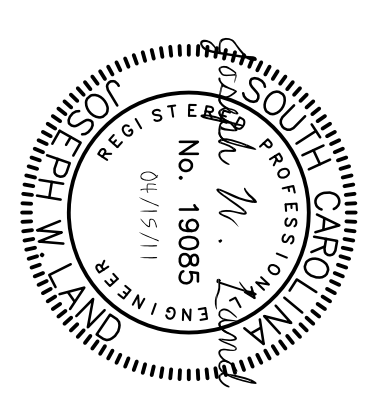
1
E-6
SCALE: 1/8" = 1'-0"

FIRST FLOOR FIRE ALARM PLAN - BLDG 145



NOTES

- WHERE CONDUIT SIZES ARE NOTED ON PLAN, THE HORIZONTAL RACEWAYS WERE INSTALLED UNDER A PREVIOUS CONTRACT WHEN THE CEILINGS WERE REPLACED. CONTRACTOR MAY USE THESE RACEWAYS TO INSTALL FIRE ALARM WIRING. FOR PLACEMENT OF DETECTOR FROM CEILING BOXES, WERE NOT INSTALLED UNDER THE PREVIOUS CONTRACT, CONTRACTOR SHALL PROVIDE DETECTOR AND NOTIFICATION DEVICES. THE CEILING SUPPORT BRACKETS FOR DETECTION AND NOTIFICATION DEVICES.



PROJECT TITLE: FIRE ALARM UPGRADES
COMPUTER CENTER ANNEX BUILDING



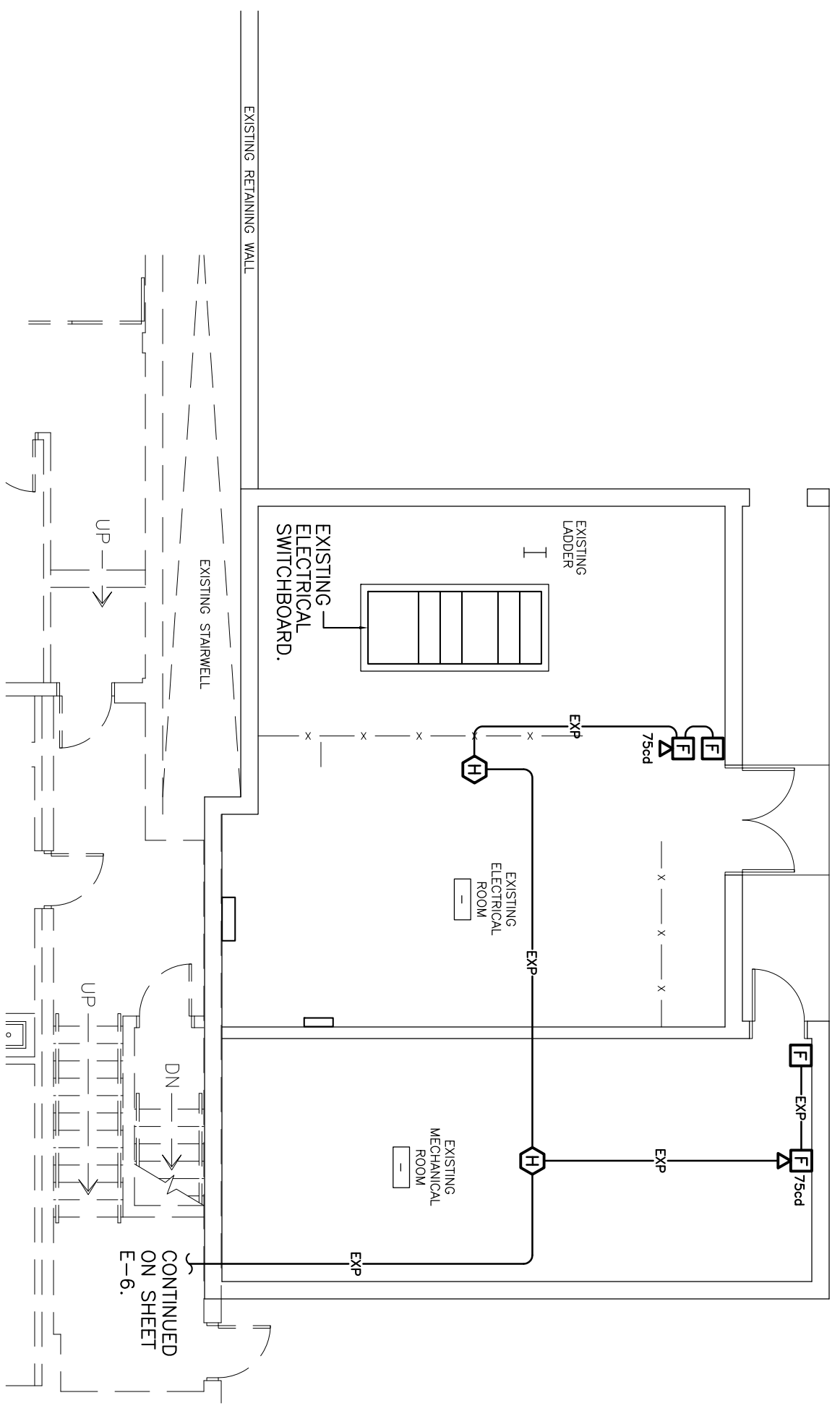
University of South Carolina

BUILDING:	DRAWING:	DATE:	DRAWN BY:	CHECKED BY:	SEAL:
145	DESCRIPTION	15APR11	JWL	JWL	
REV.	DATE	DATE	ORIG. BY	DRAWN BY	
		07SEP05			
		21AUG06			
		26MAR08			

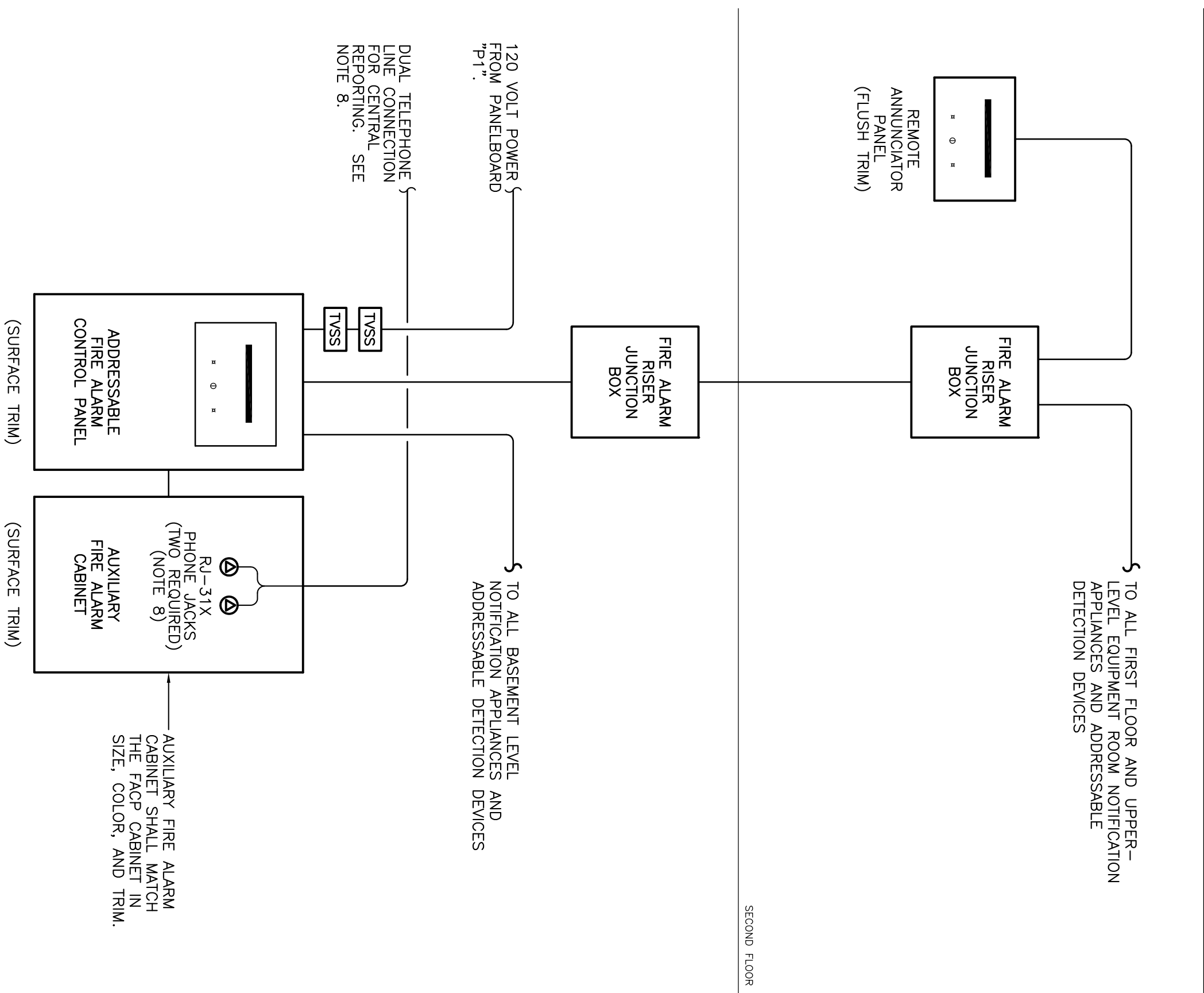
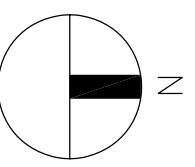
CAMPUS PLANNING
AND CONSTRUCTION
COLUMBIA, SC 29208

GENERAL FIRE ALARM SYSTEM NOTES

- FURNISH SHOP DRAWINGS FROM THE FIRE ALARM MANUFACTURER INDICATING ALL WIRING FOR DETECTION AND NOTIFICATION CIRCUITS. INCLUDE EQUIPE, DIAMETERS OF CABLES, RACEWAY SIZES, NUMBER AND TYPES OF WIRES/CABLES, DIAMETERS OF CONDUITS, AND TYPES OF TERMINALS AND CONNECTORS. SHOP DRAWINGS SHALL BE PROVIDED ON 24" X 36" (D-SIZE) PRINTS.
- ALL STROBES SHALL BE SYNCHRONIZED. ALL AUDIBLE NOTIFICATION DEVICES SHALL BE SYNCHRONIZED AND SHALL BE SYNCHRONIZED TO PROVIDE SUFFICIENT SOUND PRESSURE LEVEL (SPL) TO BE HEARD AT THE SECONDARY POWER SUPPLY IN ACCORDANCE WITH NFPA 72.
- SPlicing: CONNECT CONDUCTORS ASSOCIATED WITH THE FIRE ALARM SYSTEM THAT ARE TO BE JOINED TOGETHER TO THE TERMINALS OF THE SYSTEM. MARK ALL CONNECTIONS IN ACCORDANCE WITH THE WIRING DIAGRAMS. USE THE FOLLOWING: ALL CONNECTIONS WITH APPROVED CRIMP-ON TERMINAL, SPADE LUGS, PRESSURE-TYPE TERMINAL BLOCKS OR PLUG CONNECTORS. SOLDER AND/OR WIRE NUTS SHALL NOT BE USED. PROVIDE GREEN/LITE CABLE ACCESSORY CORPORATION GTR-SERIES, BREAKOFF TYPE TERMINAL BLOCKS OR PRIOR APPROVED EQUAL (PHONE: 626-573-6283).
- PROVIDE THREE SETS OF OPERATION AND MAINTENANCE MANUALS FOR THE FIRE ALARM SYSTEM. PROVIDE A BINDER FOR EACH SET.
- PROVIDE A COMPLETE FIRE ALARM TEST IN ACCORDANCE WITH NFPA 72. ALL SMOKE DETECTORS SHALL BE TESTED WITH AN APPROVED AEROSOL SMOKE PRODUCT. PROVIDE A WRITTEN RECORD OF THE INSPECTIONS, TESTS, AND DETAILED TEST RESULTS IN THE FORM OF A TEST LOG. SUBMIT LOG UPON THE SATISFACTORY COMPLETION OF TESTS.
- PROVIDE 4 HOURS OF TRAINING FOR TROUBLE-SHOOTING AND MAINTENANCE OF THE FIRE ALARM SYSTEM. SCHEDULE TRAINING WITH OWNER.
- PROVIDE FOR THREE SITE VISITS BY A FIRE ALARM SYSTEM TECHNICIAN AFTER PROJECT COMPLETION TO ADJUST AND/OR REPROGRAM THE FIRE ALARM SYSTEM AS REQUESTED BY THE OWNER.
- PROVIDE TWO #24 AWG, 4-PAIR TELEPHONE CABLES IN 3/4" EMT FROM THE EXISTING COMMUNICATIONS BACKBOARD "CB1" LOCATED IN THE BASEMENT ELECTRICAL ROOM 006 TO SUPPLY EACH RJ-31X TELEPHONE JACK. CABLE WILL BE FURNISHED BY USC. PROVIDE TWO #12 AWG, 1-PAIR TELEPHONE CABLE AT THE BACKBOARD END FOR CONNECTION BY UNIVERSITY PERSONNEL.



1
E-7
UPPER-LEVEL EQUIPMENT ROOM
FIRE ALARM PLAN - BLDG 145
SCALE: 1/8" = 1'-0"



2
E-7
FIRE ALARM SINGLE-LINE DIAGRAM
NOT TO SCALE

BUILDING:	DRAWING:	DATE:	DRAWN BY:	CHECKED BY:	SEAL:
145	DESCRIPTION	15APR11	JWL	JWL	SOUTH CAROLINA ENGINEERING ASSOC. INC. No. C00953
REV.	DESCRIPTION	DATE	DATE	ORIG. BY	DRAWN BY
			07SEP05		
			21AUG06		
			26MAR08		
			30SEP08		
			03FEB10		

PROJECT TITLE: FIRE ALARM UPGRADES
COMPUTER CENTER ANNEX BUILDING



University of South Carolina

CAMPUS PLANNING
AND CONSTRUCTION
COLUMBIA, SC 29208

